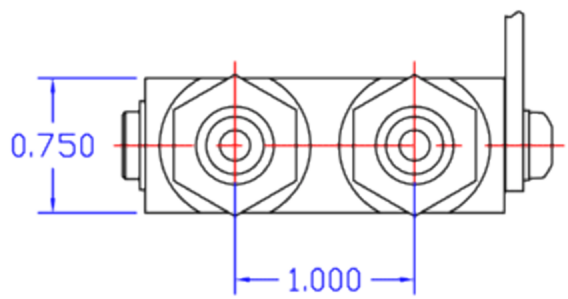
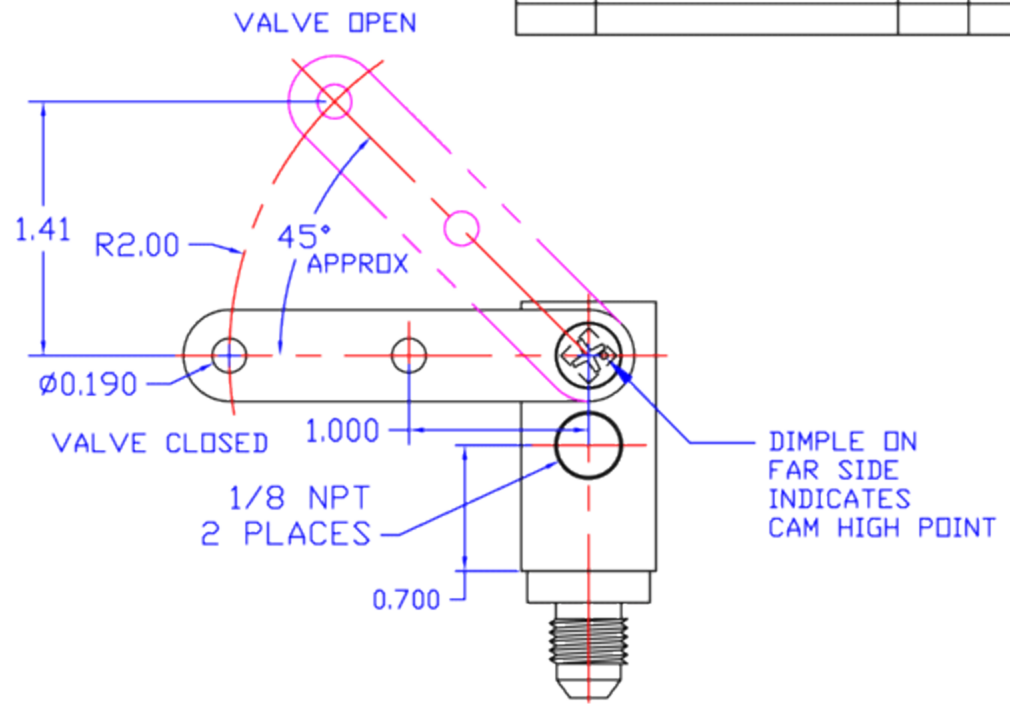
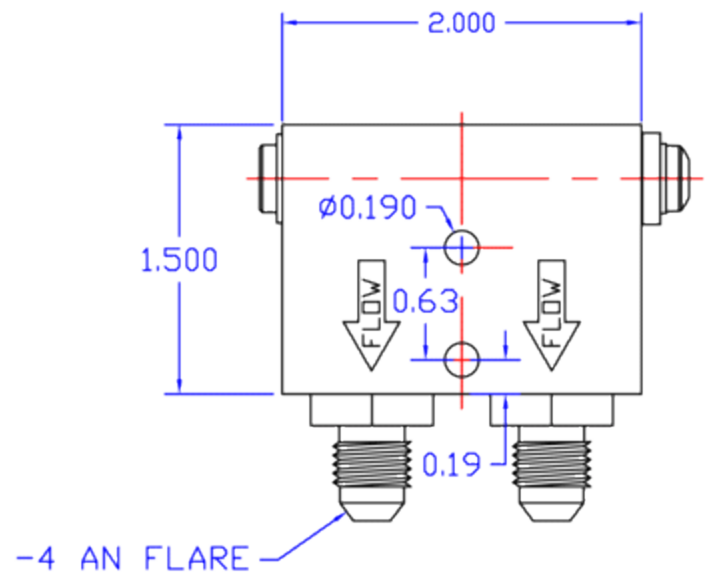


REVISIONS			
CHG LTR	CHANGES	BY	DATE



NOTES

1. FOR USE WITH MIL-H-5606 HYDRAULIC FLUID
2. MAX OPERATING PRESSURE IS 1200 PSI.
3. WEIGHT .32 LBS

**Grove**  
Aircraft Landing Gear Systems inc.  
1800 JOE CROSSON DRIVE, ELCAJON, CA 92020

**PARKING BRAKE VALVE**

TOLERANCE DECIMAL 0.XX= +/-0.030 DECIMAL 0.XXX= +/-0.010 DECIMAL 0.XXXX= +/-0.005 ANGLE = 0.25 DEGREES	DRAWN BY R. P. Grove	DWG NO. 068-004	REV IR
	DATE 8/22/07	SCALE None	SHEET 10F1